

HICKSON MEDICAL CENTER

5924

HICKSON ROAD

JACKSONVILLE

The Neighborhood

Situated at the intersection of Hickson Road and University Boulevard. The Hickson Medical Center location offers direct connection to premier Jacksonville area medical offices and resources.





The Area

- A ___ Northeast Florida Endocrine
- B ___ Memorial Hospital Jacksonville
- C ___ Brooks Rehabilitation Hospital
- D ___ Baptist Primary Care
- E ___ Brooks Hospital Expansion 1
- F ___ Brooks Hospital Expansion 2
- G ___ River Point Behavioral Health
- H ___ VA Health Center
- I ___ Brooks Rehabilitation Medical Group
- J ___ Aschi Heart & Vascular Center
- K ___ Specialty Imaging
- L ___ Heartland Health Care Center of South Jacksonville



The Space

Welcome to the Hickson Medical Center; Jacksonville's most innovative class A medical office building.

The Hickson Medical Center offers a modern and reimagined professional environment perfectly located and redesigned for medical practices.

Across the street from Memorial Hospital, Brooks Rehabilitation Hospital and many other medical offices. The Hickson Medical Center is also minutes from I-95.





HICKSON MEDICAL CENTER

5924 Hickson Rd Jacksonville, Florida

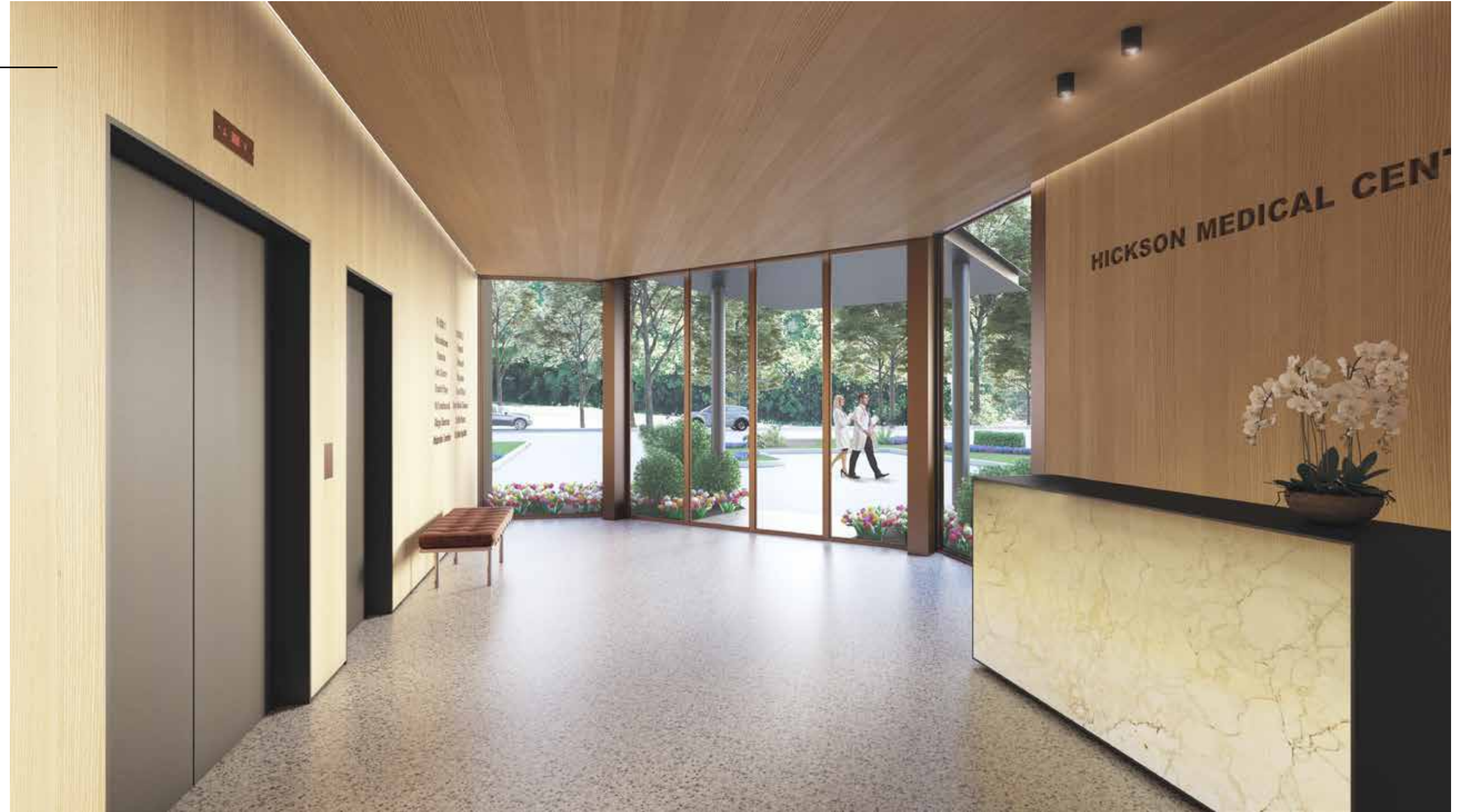
Conceptual dialysis clinic - floor plan

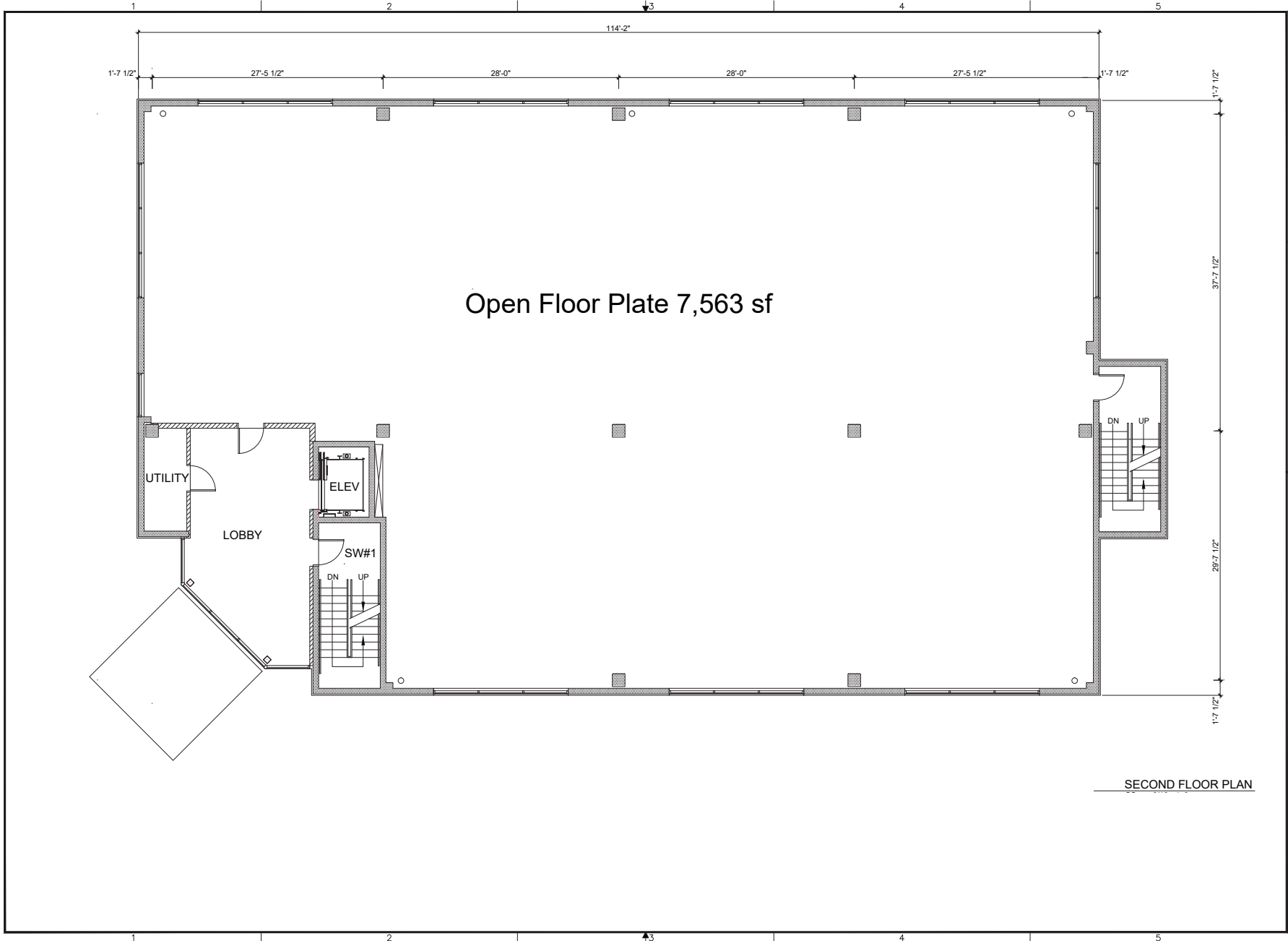
Building Elements:

Availability of special materials, finishes, and details for spaces which are to be kept sterile, such as integral cove base.



Modernized entry and lobby space





VRL
Architects, Inc.
 #AAG001735
 1448 Palm Avenue
 Jacksonville, Florida
 T (904) 723-3855
 www.vrlarchitects.com

PROJECT ARCHITECT
 STEPHEN F. LAZAR AIA
 LIC. NO. AR0705

DESIGN DOCUMENTS

ISSUE	DATE
PERMIT	10 JULY 2016
REV. #1	18 JULY 2019

**HICKSON ROAD MEDICAL OFFICES
 RENOVATION**
 9924 Hickson Road Jacksonville, Florida 32207

VRL PROJECT NO: 1724
 DRAWN BY:
 CHECKED BY: SFL
 SHEET NO:
 SHEET

Luxury Main Lobby



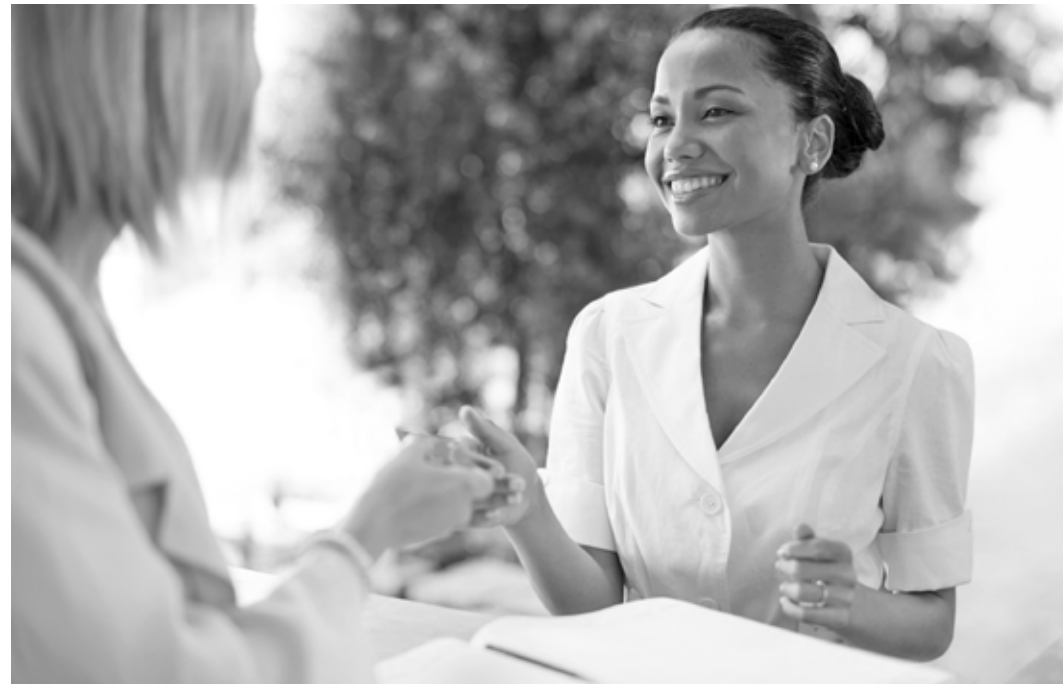


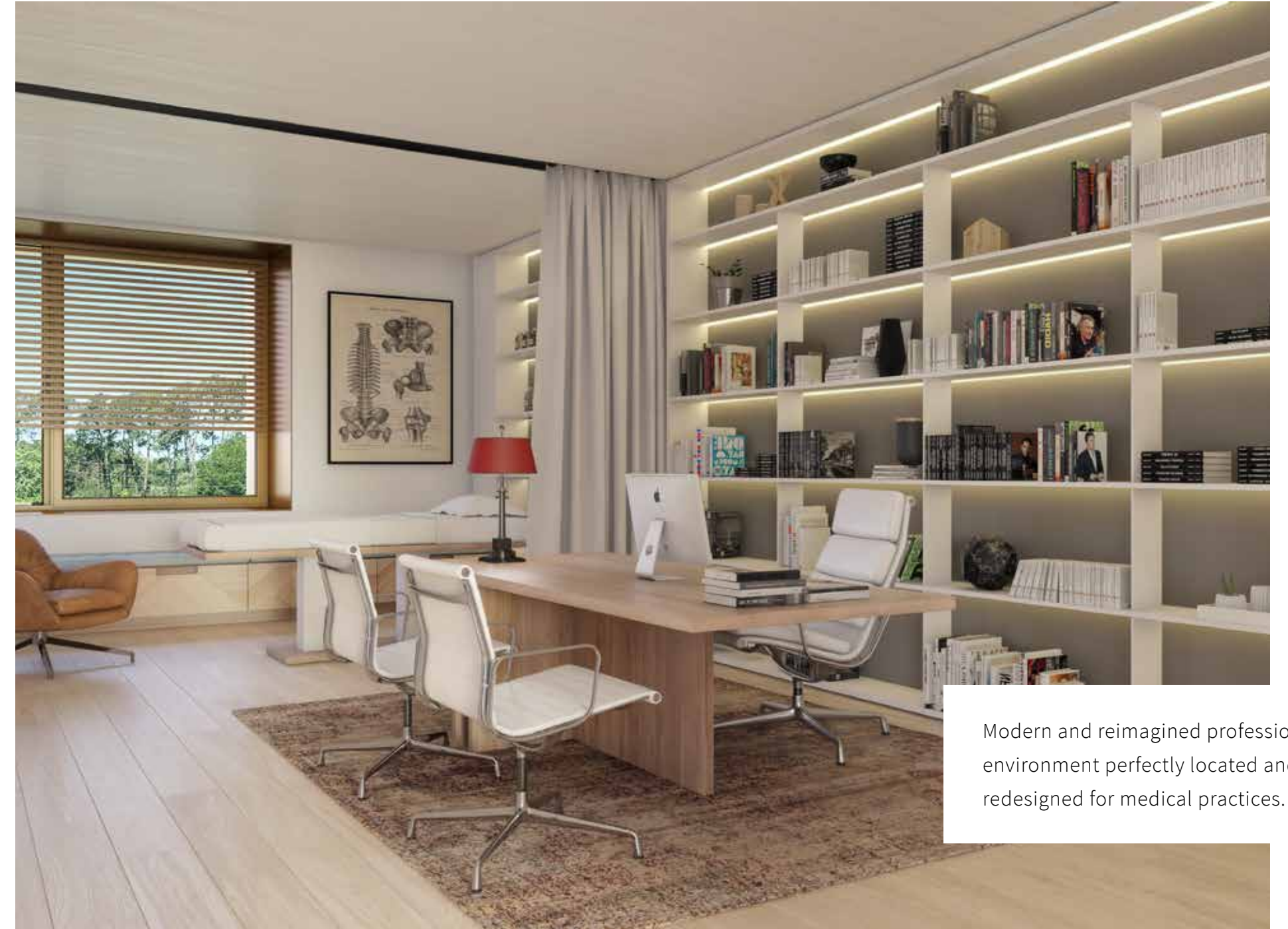
HICKSON MEDICAL CENTER

5924 Hickson Road, Jacksonville

conceptual multi-occupant floor plan

Spacious Floor Reception





Modern and reimagined professional environment perfectly located and redesigned for medical practices.

*“To keep the body in good health is a duty...
otherwise we shall not be able to keep our mind strong and clear.”*

Buddha



The Hickson Medical Center (7:30 PM)



The Building Specifications:

BUILDING SIZE

- 15,539 rentable SF available
- Modernized entry and lobby space
- Flexible floor plans

OUTDOOR AREAS

- Recently refreshed landscaping
- 52 parking spaces (with several covered spots)

BUILDING ELEMENTS

- Careful detailing of doorframes, casework, and finish transitions to avoid dirt-catching and hard-to-clean crevices and joints.
- Availability of special materials, finishes, and details for spaces which are to be kept sterile, such as integral cove base.
- Availability use of disinfection antimicrobial surface protectant coatings to eliminate harmful bacteria, virus, and mold.
- Cameras and site lighting on premises.
- New windows at all facades, full height glass in lobby.
- Building envelope upgraded to meet the 2017 Florida Energy Code.

PLUMBING

- Build to suit plumbing systems to accommodate bathrooms, sinks, and showers as required.

MECHANICAL

- Adequate ventilation for indoor air quality (Air changes per hour, ACH).
- Availability use of containment filters and HEPA filters in HVAC equipment.
- Build to suit HVAC equipment to meet humidity, temperature, and disinfection requirements.

ELECTRICAL

- Physical and electromagnetic protection of wiring.
- Minimized voltage potential between patients and medical equipment.
- Isolated grounding of devices as required.
- Back-up generator for essential electrical use needs.

ACCESSIBILITY

- Compliant with all ADA requirements.



HICKSON MEDICAL CENTER
5924, HICKSON ROAD JACKSONVILLE

TOM DELAHANTY, CCIM
CREST REALTY

t: +1 904 900 2131

c: +1 904 716 9300

e: t.delahanty@crest-realty.net